

# PRESSURIZED POINTED NIB ROMANS

---

L E F T H U B P

R D G C Q

S V W X Y Z

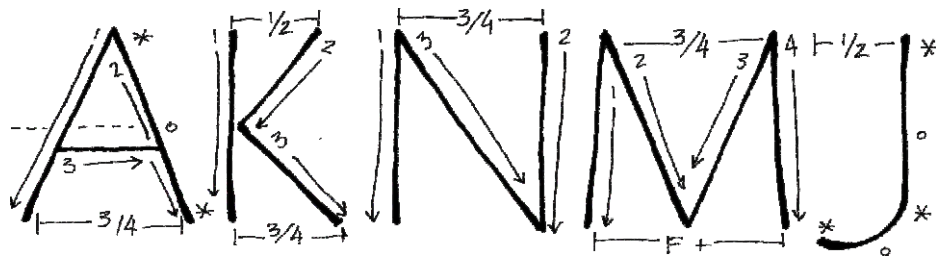
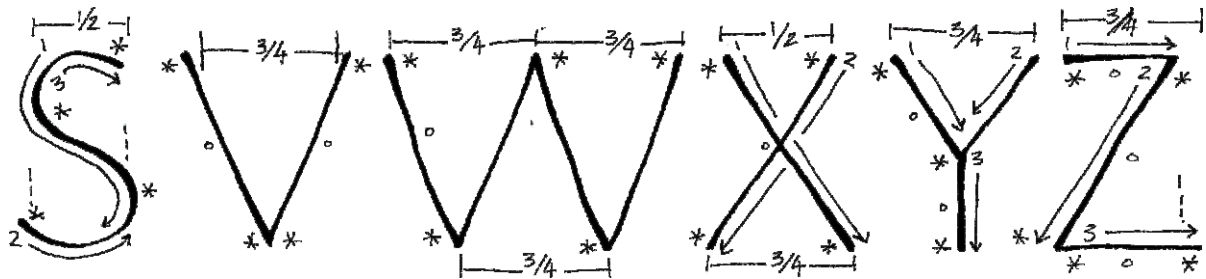
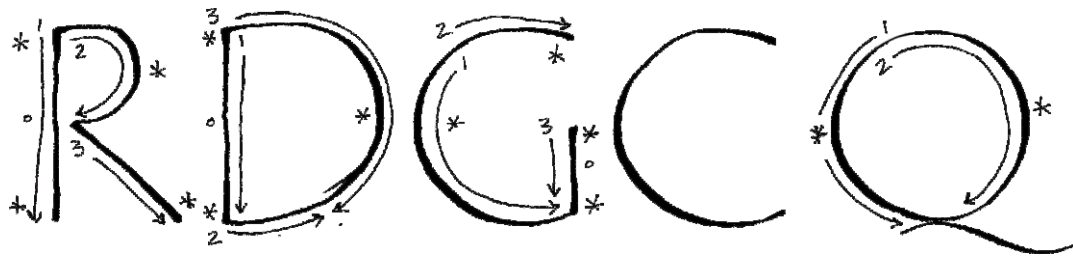
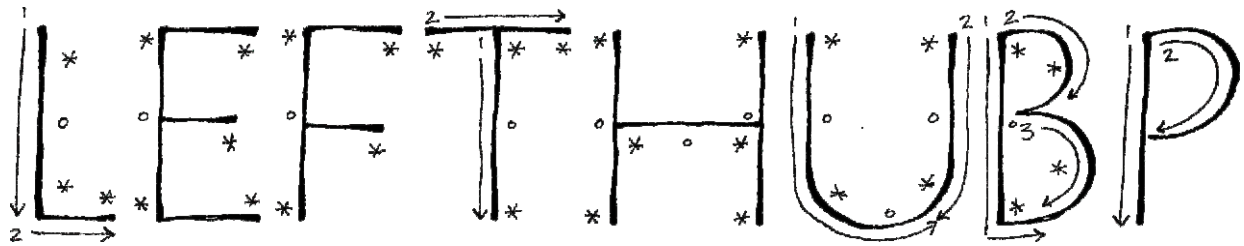
A K N M J

ROMAN CAPITALS-THE "LIFE DRAWING" OF  
CALLIGRAPHY, ALL THE SUBTLE REFINEMENTS.

PETER THORTON

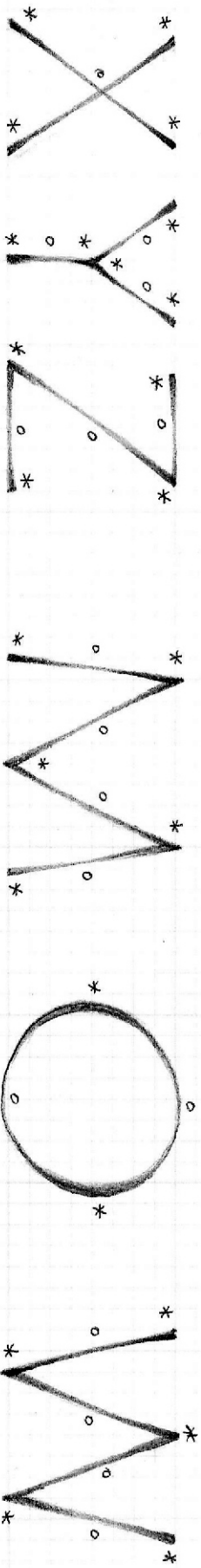
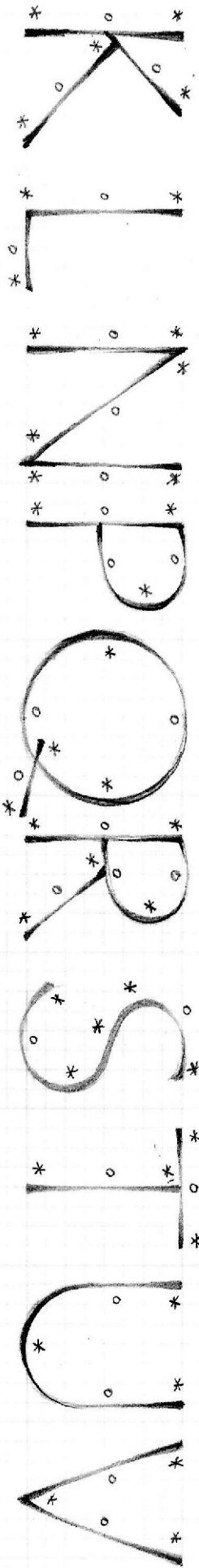
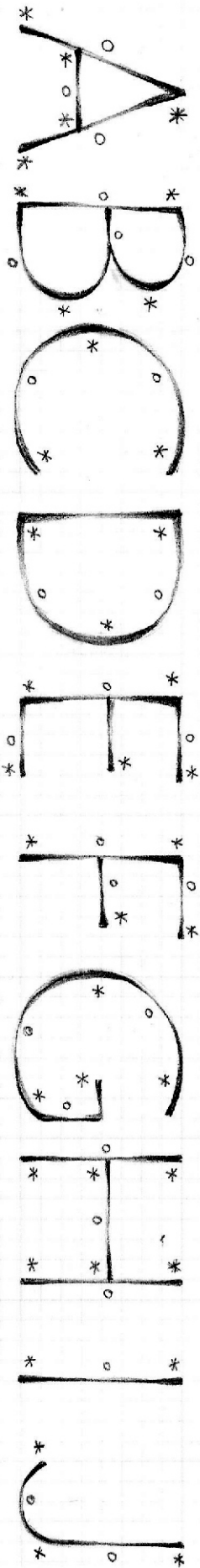
# PRESSURIZED POINTED NIB ROMANS

---

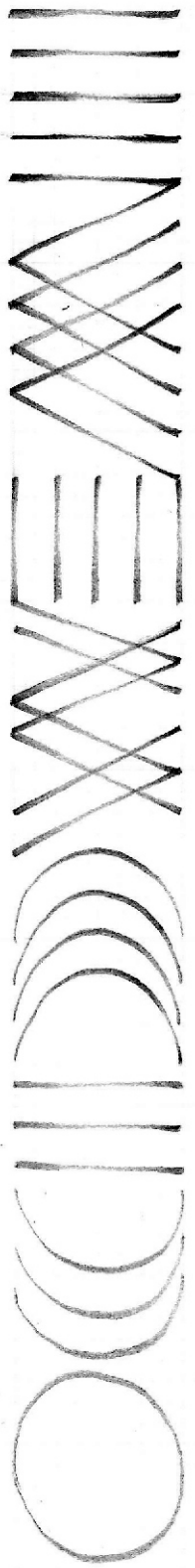


\*-PRESSURE

o-NO PRESSURE

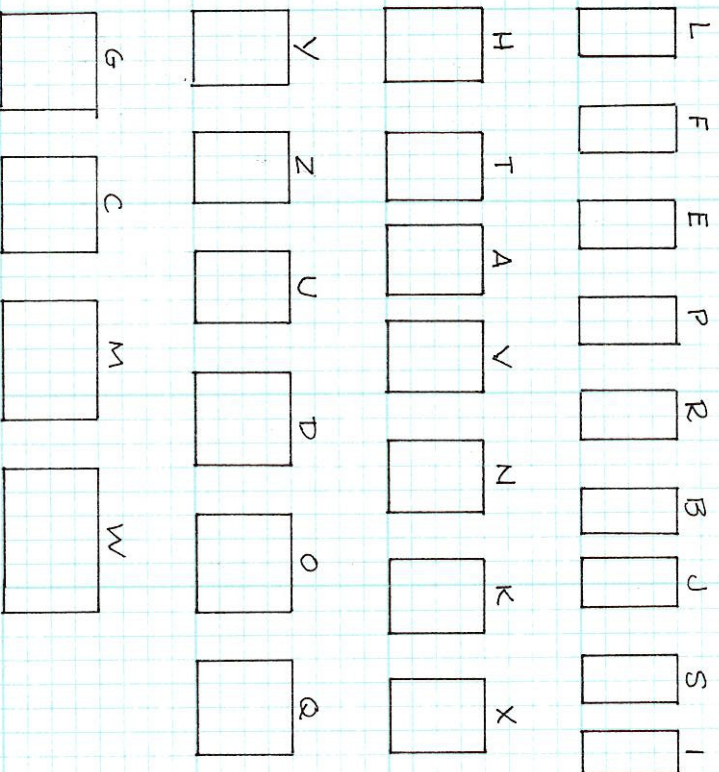


July '19

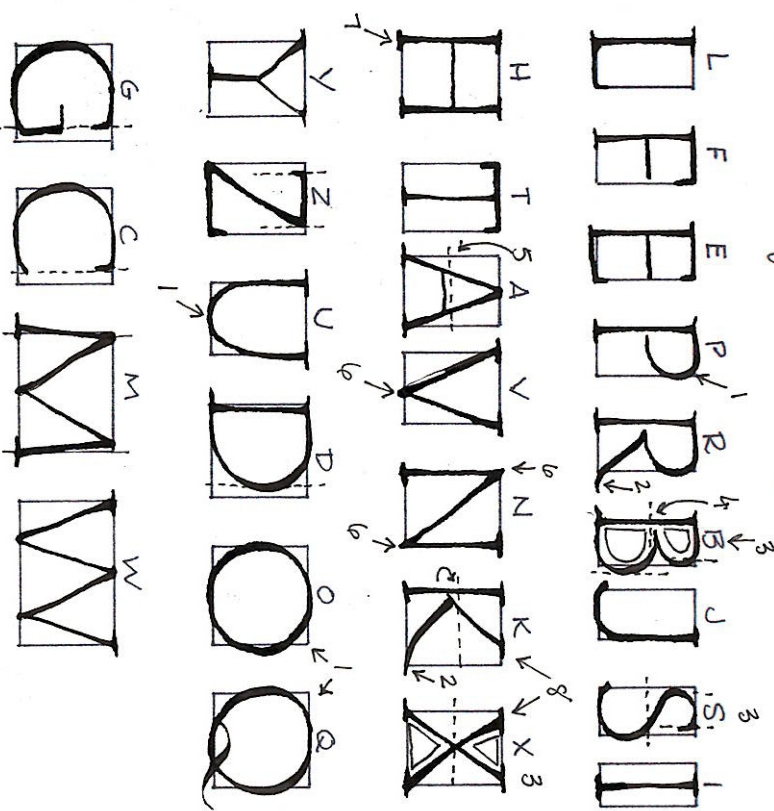


PRESSURIZE  
ROMAN CAPS  
Device device

# Grid for Roman Capitals 1/2"



# Grid for Roman Capitals 1/2"



- 1- Round portions bulge the frame
- 2- Toe kicks out for balance
- 3- Upper negative space is larger than lower
- 4- Crossbar above center
- 5- Crossbar below center
- 6- Points protrude frame
- 7- Serifs extend beyond frame
- 8- Shorter serif on inside of angled line